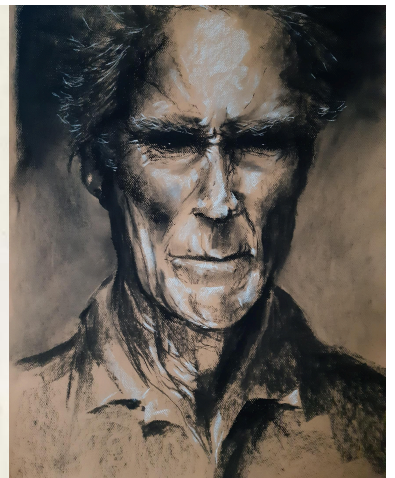


Noosa Arts & Crafts



EXPRESSIVE DRAWING
6 weeks with LIZZIE CONNOR
FEB 4 TO MARCH 11 9am - 12 pm
Members \$180 Non-Members \$ 210



Expressive drawing is an art form that prioritises emotional expression over technical precision, allowing artists to channel their feelings and thoughts directly onto the page, capturing the artist's inner emotional landscape through spontaneous and intuitive strokes.

Expressive drawing is all about letting your emotions and thoughts spill out onto the page. It's not about creating perfect pieces; it's about raw expression, like having a heart-to-heart chat, but with your sketchbook instead. This course will be utilising bios, felt tip pens, graphite sticks and charcoal.

MATERIALS LIST

- 1 box of Willowstick Charcoal
- 2 sticks of compressed black charcoal
- 1 6B graphite pencil or graphite stick
- 1 white artists' soft pastel
- 1 soft pastel Eraser
- 1 x A4 visual diary/sketch book (approximately \$5 from Officeworks, for notes and experiments)
- 1 x A3 size Mixed media paper pad.