

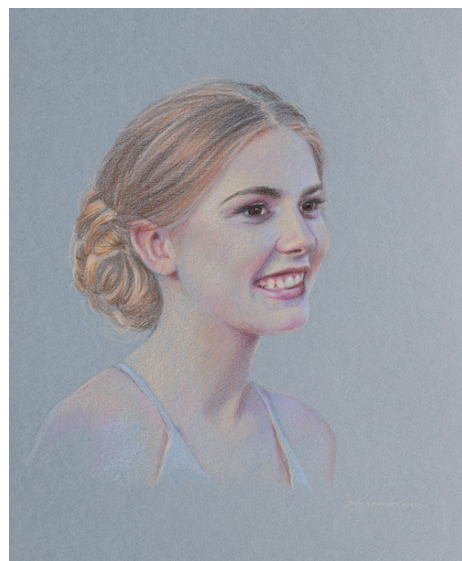
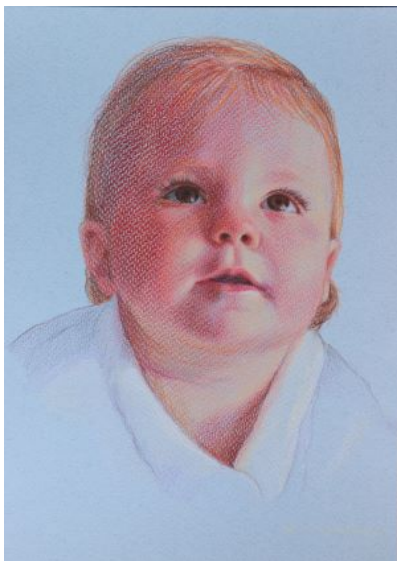
## Noosa Arts & Crafts



PORTRAITS IN COLOUR PENCIL with  
JAN LAWNIKANIS

**MARCH 29 & 30** 9am - 4pm

Members \$150 Non-Members \$180



Human portraits are the focus for this weekend workshop using colour pencils. Learn about facial anatomy, creating skin tones and how to realistically portray all the individual features of a face and hair. Ideally this workshop is designed for those with some experience (even a little) using colour pencils.

Jan has been using and teaching coloured pencils in classes for the past 30 years and she will generously share with you all the information she has garnered from her experience.

You will be surprised by the endless possibilities this medium has to offer!



## Materials List

Your colour pencil collection: You will need a large range of colours in a professional brand, at least 36, but the more the better! Recommended brands are Sanford Prismacolor or Faber- Castell's Polychromos or Albrecht Durer varieties; OR: Derwent Coloursoft; and Caran d'Ache Luminance, Pablo or Supracolor. But do avoid any children's or student's coloured pencils or you will end up very frustrated with their limited potential. (Pencils may be water soluble.) If available, also buy a Prismacolor Colourless Blender.

Graphite (lead) Pencil- B or 2B; Kneadable eraser; Masking tape; Ruler; Scissors

Sharpener: I recommend the desk type rotary sharpeners. Or better still, a rechargeable electric eraser. Costs for either are anywhere between \$25 -\$70 but are well worth the expense and will help your pencils last longer. Otherwise, the small, all metal sharpeners will do. Buy the pencils first and then check that they will fit the holes in the sharpener.

- 1 sheet graphite transfer paper. Jan will bring some for \$3 per sheet if you don't have one.
- Drawing board eg, a Gatorboard, MDF board or similar, (must be smooth). Bring along something to prop up one end of the board so that you can work with the board slanted upwards. If your board is not perfectly smooth, then bring a piece of cardboard to cover it.
- Masking tape
- New soft bristle brush 2" wide or larger. For brushing away pencil crumbs.
- A 'dud' photograph or transparency for using under your drawing hand to prevent smudging your work.

Paper: Any good quality drawing paper at least 160 gsm, but thicker is preferred. Hot pressed watercolour paper or Stonehenge paper is also recommended. To try a coloured background, you will need Mi Tientes or Pastelmat pastel paper in a neutral grey, cream or brown. You will need a couple sheets for the workshop, but make sure they are A4 size or larger.

- Optional extras: Battery operated eraser. Pencil extenders.
- Reference material: I will supply a range of references for this workshop, but you are welcome to bring other copyright free photographs of loved ones or others. They need to be very sharp in focus, cropped to just the face and neck/shoulders and be large enough to see all the detail. You will need a colour version and a photocopy (b&w or colour.)