

Roundabout Wallace House April 2025

[View this email in your browser](#)**APRIL 2025**

Dear All

We had wonderful celebration of life for Heather de Grandi last month - many attended and the highlight was Heather's closest friends Kevin, Donna and Jenny attended. There was beautiful display of Heather's work and a condolence book was there for everyone to sign.

Open House was a success! Saturday was the busiest day and we had a steady stream of visitors. Both the shops and the café had good sales. Lots of interest, many brochures taken and membership forms requested. A huge thank you to all those members, who demonstrated and greeted the guests - all upstaged by Mr Blue Sky, the budgie! Thank you to Karen and Tracy for looking after the café and to all those members who helped and baked.

ARTASTICA is next on the calendar - all groups are featured.....Jenny Blyth is our Exhibition co-ordinator and will be contacting group leaders soon with all the details. The exhibition will be opened by local well-known artist DON MILNER. We are excited about this as Don has always been a supporter of NSACA and has given his time for workshops and Art After Dark. Many of you will have had the pleasure of attending one of his tutorials.

May 10, Simone K Leao is coming to give us an insight into her recent residency in Iceland as well as her exhibits in both Milan and New York Fashion Week. She will be bring along some of her work and there will be light refreshments for you to enjoy. Bookings are online or in the office. This is a fundraising event and all proceeds are for NSACA. See below.

If you can be anything, please be kind.

Jan

President

PS: Please wear your lanyards whenever you are in Wallace House - this is an important insurance and health and safety issue as we need to be able to easily access your allergies and emergency contact details in case of an emergency.



The poster features a marbled background in shades of blue, teal, and white. At the top, the text 'NOOSA ARTS & CRAFTS PRESENTS' is written in a blue, sans-serif font, flanked by two blue pentagonal icons containing a white flower. Below this, the word 'ARTASTICA' is written in large, bold, orange letters with a black outline. Underneath, the dates 'May 3, 4 & 5' are written in orange, followed by '9am - 3pm daily' in a smaller orange font. The opening information 'Opening May 2 at 5.30pm by local artist Don Milner' is written in orange. The main description 'An exhibition of outstanding arts and crafts by our members' is in white with a black outline. Below that, 'Featuring everything from Acrylics to Watercolour and Beading to Weaving.' is written in black. At the bottom, the address 'WALLACE HOUSE, 1 WALLACE DRIVE, NOOSAVILLE 4566' is written in black. A QR code is located in the bottom right corner.

NOOSA ARTS & CRAFTS PRESENTS

ARTASTICA

May 3, 4 & 5
9am - 3pm daily

Opening May 2 at 5.30pm
by local artist Don Milner

An exhibition of outstanding
arts and crafts by our members

Featuring everything from Acrylics to Watercolour
and Beading to Weaving.

WALLACE HOUSE, 1 WALLACE DRIVE,
NOOSAVILLE 4566





An afternoon with Simone Z Leao



To Book

Saturday May 10 - 2pm to 4pm

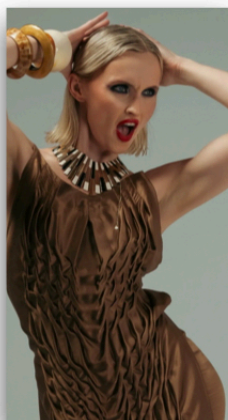
\$30 per person

Includes light refreshments

Some of Simone's amazing artworks will be on display

Simone's work has been exhibited in Milan and New York Fashion Week.

Simone was born in Brazil and travelled and lived in Europe, Africa and Asia, before settling in Australia 15 years ago. During her long and successful career in science and engineering, Simone has always found time to develop her art and is a former President of Noosa Open Studios. She is currently on an art residency in Iceland.



DRAWING, MIXED MEDIA, SCULPTURE, TEXTILES



Wallace House, 1 Wallace Drive, Noosaville 4566



Welcome back, Neita!

Neita Lindfield is a founder member of NSACA. Her husband, Brian Lindfield, was a Noosa Councillor when Wallace House became our Centre for Creativity. She moved to Eumundi from Tin Can Bay to be near family.

Neita has joined Creative Artists on Thursday afternoons and has a wealth of stories of early NSACA.

NEW WORKSHOPS FOR 2025

[Bookings are open](#)

Every Saturday - Learn to crochet

April 12 & 13 - Urban Spaces - with Lizzie Connor

May 6 - 4 weeks - Pen & Wash - with Lizzie Connor
May 17 & 18 - Water Scenes - with Jan Lawnikanis
May 24 & 25 - Expressive Abstract - with Di Smith
June 3 - 4 weeks - Pastel & Pets - with Lizzie Connor
May 21 & 22 - Introduction to gouache - with Jan Lawnikanis
July 5 & 6 - Landscapes - oils & acrylics - with Ben Winspear
July 26 & 27 - Transparent & Reflection - with Jan Lawnikanis
August 2 & 3 - Pastels - Distance and Light with Karol Oakley
August 19 - 6 weeks - Escape to the Ocean - with Lizzie Connor
August 30 & 31 - Human & Animal portraits - with Jan Lawnikanis
September 6 & 7 - Pastel Skills - with Maxine Thompson
September 13 - Abstract Landscape Masterclass with Kym Barrett
November 1 & 2 - Birds in Watercolour - with Jan Lawnikanis
November 22 & 23 - Underpainting for Pastels - with Karol Oakley

Dates for Events in 2025

ARTASTICA & Ceramic Market - May 3 - 5

(Mother's Day is May 11)

Simone Z Leao - May 10

Membership Renewal - July 1

Wallace House Quilters' Exhibition - September 21 & 22

Noosa Open Studios - October 10 - 19

Christmas Market - November 14, 15 & 16

AGM - December 1 at 10am



CRM:001260487394

