

Roundabout Wallace House April 2025

[View this email in your browser](#)**APRIL 2025**

**NOOSA ARTS & CRAFTS PRESENTS**

# **ARTASTICA**

**May 3, 4 & 5**  
9am - 3pm daily

**Opening May 2 at 5.30pm**  
**by local artist Don Milner**

An exhibition of outstanding  
arts and crafts by our members

**Featuring everything from Acrylics to Watercolour  
and Beading to Weaving.**

**WALLACE HOUSE, 1 WALLACE DRIVE,  
NOOSAVILLE 4566**



Dear All

I hope you all had a wonderful Easter break and enjoyed some family time plus a little chocolate perhaps?

Our **ARTASTICA** Exhibition is fast approaching. Please don't mistake this for our former Artastic sales in January - this is purely an exhibition of your outstanding work for the local community to enjoy. The exhibition is open for all groups to participate. The opening is on **Friday at 5.30pm on May 2** and our guest speaker is local artist Don Milner. Our Ceramic Studio is holding a ceramic market over this weekend too - group leader Kim Williamson is the organiser.

The roster is up in the gallery and so please volunteer to look after our visitors over the long weekend.

Set-up will be on **Thursday May 1 after 12 noon** and then the finishing touches put on **Friday May 2 after 12 noon** when Pastels and Embroidery finish their group sessions. Please bring in your work on Thursday for the curating team to display.

Group Leaders, please encourage your members participate with exhibiting their work, helping in the shop and café and general meet and greet of visitors. This long weekend coincides with Rotary's Book Festival so there will be plenty of visitors in Wallace Park.

Karen Jennings has kindly offered to look after the Pop-Up café once more and we are asking the bakers among you to bring in some of your delicious cakes and slices too please.

MC member Jenny Blyth is our Exhibition co-ordinator so please direct all your enquiries to her, on 0411 244 304.

**If you can be anything, please be kind.**

**Jan**

**President**

**PS: Please wear your lanyards whenever you are in Wallace House - this is an important insurance and health and safety issue as we need to be able to easily access your allergies and emergency contact details in case of an emergency.**

**PPS: Wallace House is closed on April 25 for Anzac Day.**

---



## An afternoon with Simone Z Leao



To Book

Some of Simone's amazing artworks will be on display

Saturday May 10 - 2pm to 4pm

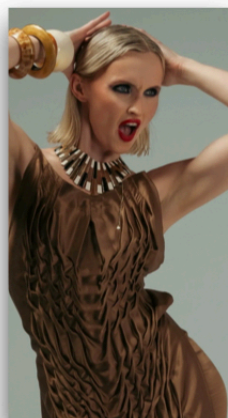
**\$30 per person**

Includes light refreshments

Simone's work has been exhibited in Milan and New York Fashion Week.

Simone was born in Brazil and travelled and lived in Europe, Africa and Asia, before settling in Australia 15 years ago. During her long and successful career in science and engineering, Simone has always found time to develop her art and is a former President of Noosa Open Studios. She is currently on an art residency in Iceland.

**DRAWING, MIXED MEDIA, SCULPTURE, TEXTILES**



Wallace House, 1 Wallace Drive, Noosaville 4566

### NEW WORKSHOPS FOR 2025

[Bookings are open](#)

**Every Saturday** - Learn to crochet

**May 6** - 4 weeks - Pen & Wash - with Lizzie Connor

**May 17 & 18** - Water Scenes - with Jan Lawnikanis

**May 24 & 25** - Expressive Abstract - with Di Smith

**June 3** - 4 weeks - Pastel & Pets - with Lizzie Connor

**May 21 & 22** - Introduction to gouache - with Jan Lawnikanis

**July 5 & 6** - Landscapes - oils & acrylics - with Ben Winspear

**July 26 & 27** - Transparent & Reflection - with Jan Lawnikanis

**August 2 & 3** - Pastels - Distance and Light with Karol Oakley

**August 16** - Macrame jewellery with Dutchie

**August 17** - Crystal point jewellery with Dutchie

**August 19** - 6 weeks - Escape to the Ocean - with Lizzie Connor

**August 30 & 31** - Human & Animal portraits - with Jan Lawnikanis

**September 6 & 7** - Pastel Skills - with Maxine Thompson

**September 13** - Abstract Landscape Masterclass with Kym Barrett

**November 1 & 2** - Birds in Watercolour - with Jan Lawnikanis

**November 22 & 23** - Underpainting for Pastels - with Karol Oakley

---

### Dates for Events in 2025

ARTASTICA & Ceramic Market - May 3 - 5

(Mother's Day is May 11)

Simone Z Leao - May 10

Membership Renewal - July 1

Wallace House Quilters' Exhibition - September 21 & 22

Noosa Open Studios - October 10 - 19

Christmas Market - November 14,15 & 16

AGM - December 1 at 10am

---



CRM:001260487394



---

This email was sent to [wdbentley@me.com](mailto:wdbentley@me.com)

[why did I get this?](#) [unsubscribe from this list](#) [update subscription preferences](#)

Noosa Arts & Crafts Association · 1 Wallace Drive · Noosaville, QLD 4566 · Australia



